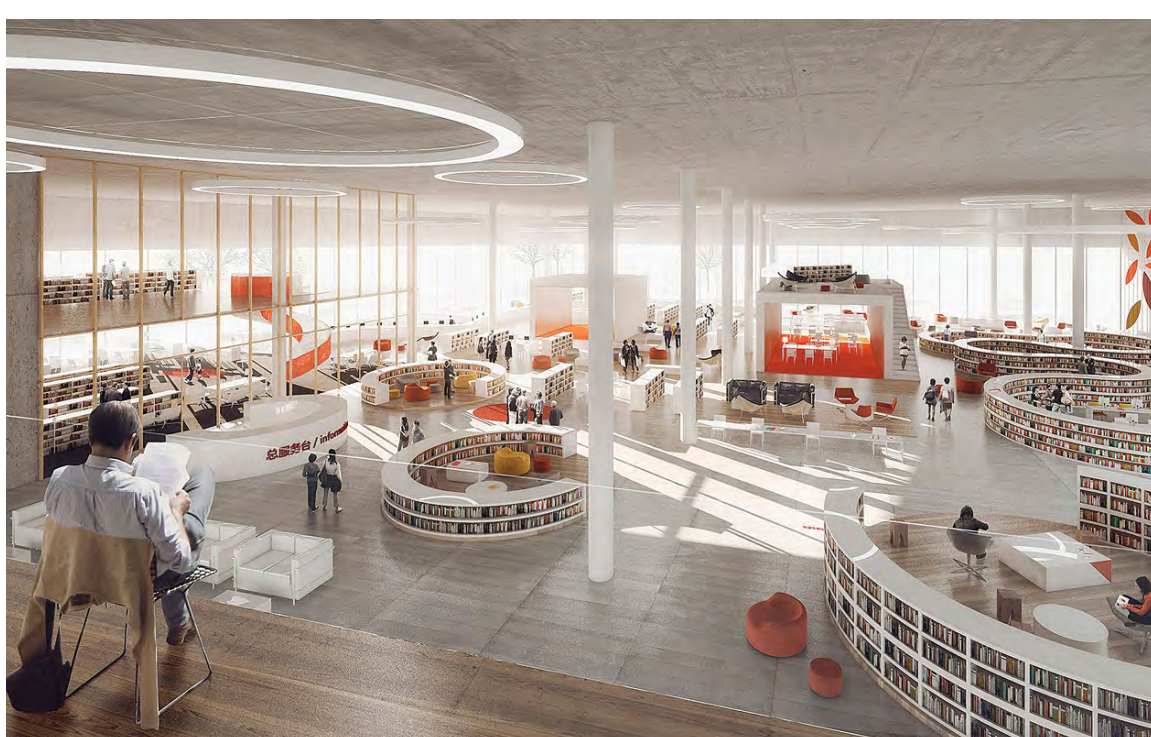


DESTINATION

Provide a facility & landmark building, within Mildenhall, that demonstrates a change in the way public services are viewed and accessed. A contemporary building that encourages and welcomes a wide range of user groups to interact and benefit from the co-location of services.



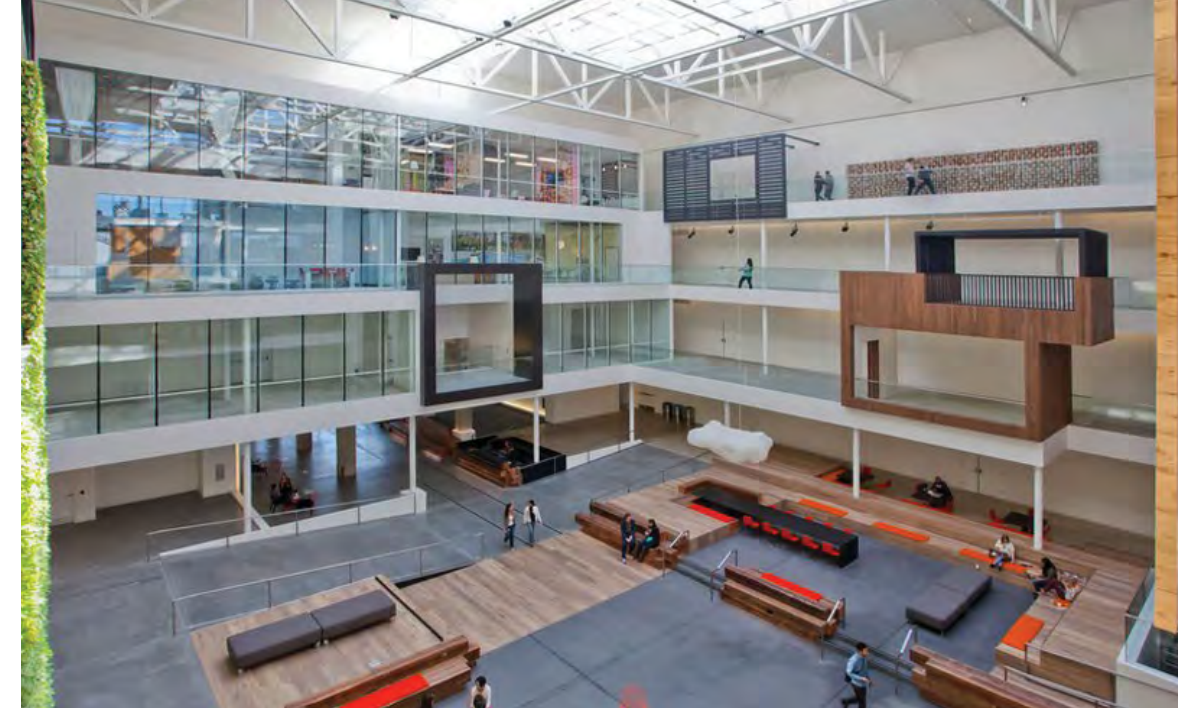
CONNECTIVITY

Incorporate a range of partners within a single building, whilst maintaining a cohesive layout that allows staff and users to navigate easily around the building.



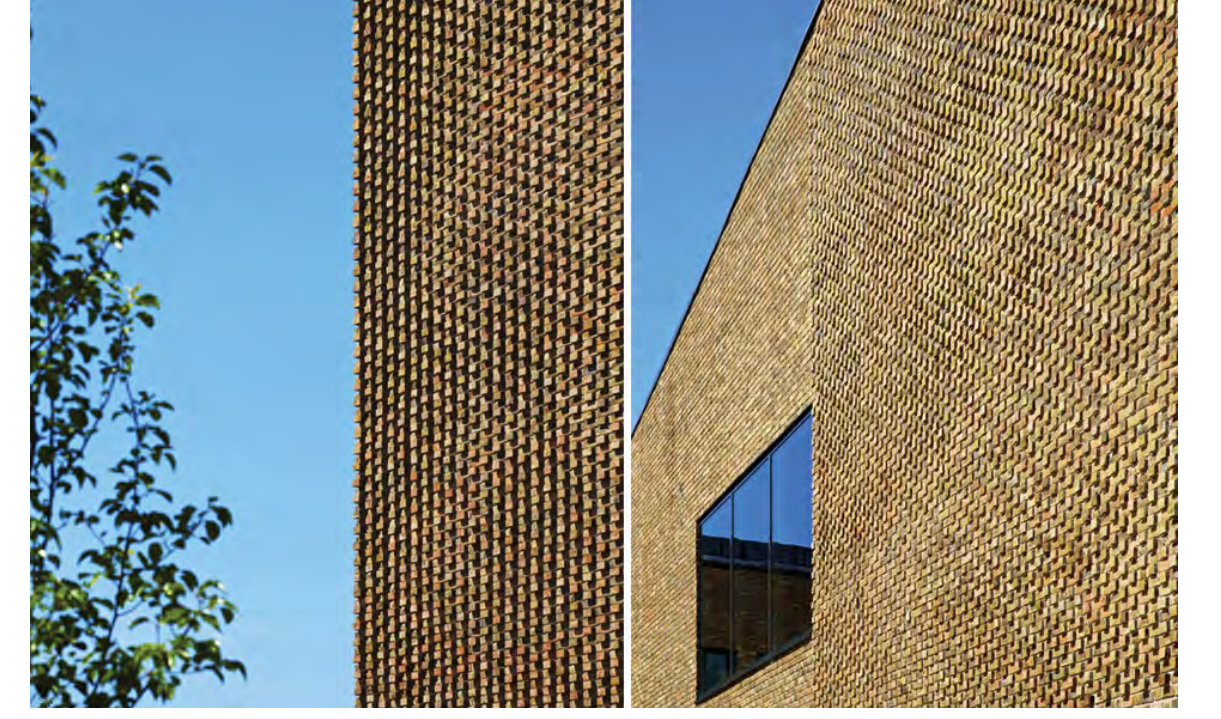
FLEXIBILITY

Design a building that provides optimal space for future advances in service delivery and population needs. To design accommodation that can be used to its maximum potential and provides opportunities for formal and informal activities.



DESIGN

Provide a building that sits comfortably within its environment whilst allowing the buildings presence and quality to be identified. Design in accordance with scale, mass, flow and architectural rhythm. To allow for a building and site that is creative and inspiring to its community.



MILDENHALL HUB - ARCHITECTURAL PRECEDENT

COMMUNITY

Follow the ethos of 'a Hub' where the majority of the site is accessible to the public and shared amongst and used by multiple users.



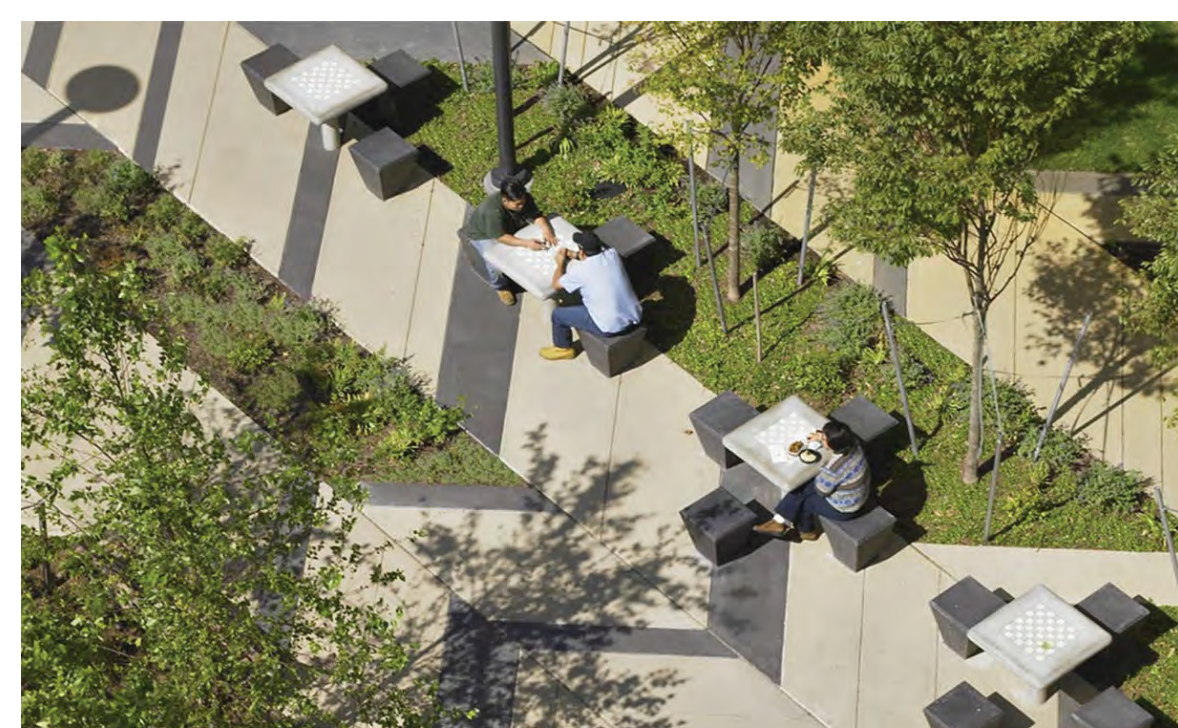
GREEN & BLUE INFRASTRUCTURE

Provide green corridors and landscape features across the site to replace any landscape and ecology features lost to development, whilst also enhancing the existing landscape. To manage surface water in a sustainable manner through a site wide Sustainable Drainage System (SuDS).



CONNECTIVITY

Provide a cohesive site which connects to the existing town, existing public routes and future development.



SUSTAINABILITY

Provide a site with a rationalised provision of vehicular access and parking whilst promoting sustainable methods of transport, through cycle routes and parking, well connected pedestrian routes, electric car charging and public transport connections.



MILDENHALL HUB - LANDSCAPE PRECEDENT